

Reveal

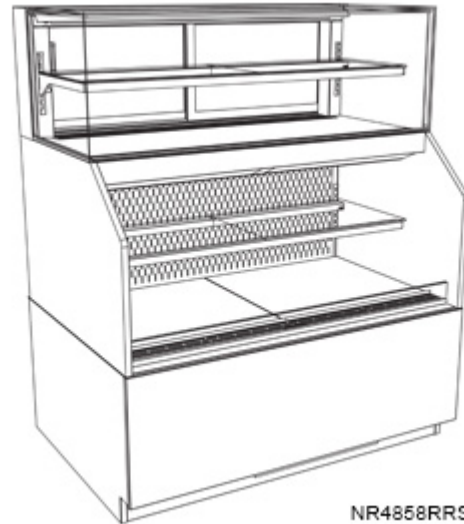
Combination Convertible Service Above Refrigerated Self-Service Case

Structural Concepts®

- **NR3658RRSSV** 35-3/4"L x 33"D x 57-1/2"H
- **NR4858RRSSV** 47-3/4"L x 33"D x 57-1/2"H
- **NR6058RRSSV** 59-3/4"L x 33"D x 57-1/2"H
- **NR7258RRSSV** 71-3/4"L x 33"D x 57-1/2"H

Included

- NOTE: Glass warranty only applicable to first point of delivery
- Breeze~E (Type-II) w/ EnergyWise s/c refrigeration
- Blue Fin coated coil
- Clear glass shelf, lighted (LED 3500K) in upper display
- Compressor air intake from rear and out front panel at toe kick. Front panel cannot be blocked.
- Condensate pan (self-contained refrig. only)
- Convertible baffle in upper display
- Fixed vertical glass
- Integrated average product temperature of 40°F or less
- LED top light
- One piece formed ABS plastic tub
- One year parts & labor; 5 year compressor warranty



NR4858RRSSV

| Specify | Standard Features | Additional Options |
|-----------------------------|--|---|
| FRAME EXTERIOR COLOR | • Black | • Painted (non-stock colors, specify RAL#) • Painted (stock colors, specify RAL#) • Stainless steel |
| INTERIOR COLOR | • Black | • NOTE: Interior color must be FDA & NSF approved • Painted (stock colors, specify RAL#) • Stainless steel |
| PANEL EXTERIOR | • Laminated (non-premium) Confirm pattern/grain direction | • Laminated (premium) Confirm pattern/grain direction • Stainless steel |
| BASE SUPPORT | • Adjustable, locking casters | • 6"H stainless steel legs • Shims (standard w/ remote) |
| LOWER FRONT PANEL | • Black | • Painted (stock colors, specify RAL#) • Stainless steel |
| LOWER REAR | • Solid back panel | • Clear glass rear sliding doors • Reflective glass rear sliding doors |
| LOWER REAR PANEL | • Black | • Painted (stock colors, specify RAL#) • Stainless steel |
| UPPER REAR | • Clear glass rear sliding doors | • Reflective glass rear sliding doors |
| LOWER DISPLAY | • None | • 1"H Full depth display riser(s) for lower display • 2"H Full depth display riser(s) for lower display • 4"H Full depth display riser(s) for lower display • Clear glass shelf, lighted (LED) |
| LIGHTS | • LED 3500K w/ frosted lens | • LED 3000K w/ frosted lens • LED 4000K w/ frosted lens |
| ELECTRICAL CONNECT | • 10' Straight blade power cord (self-cont.) | • 10' Locking power cord (self-cont.) • Electrical leads (remote) |
| REFRIGERATION | • Breeze~E (Type-II) w/ EnergyWise s/c refrigeration (rear access) | • Breeze~E (Type-II) w/ EnergyWise s/c refrigeration (front access) • Remote w/thermostat, solenoid & TXV (front access) • Remote w/thermostat, solenoid & TXV (rear access) |
| MISCELLANEOUS | | • Rear door lock • Rear wrapping board (n/a w/lower rear doors) • Second year parts & labor warranty (excludes compressor) |
| ACCESSORIES | | • Clean Sweep® coil cleaner (n/a w/remote) • Clear acrylic security cover, removable, locking • Night curtain, retractable, non-locking |

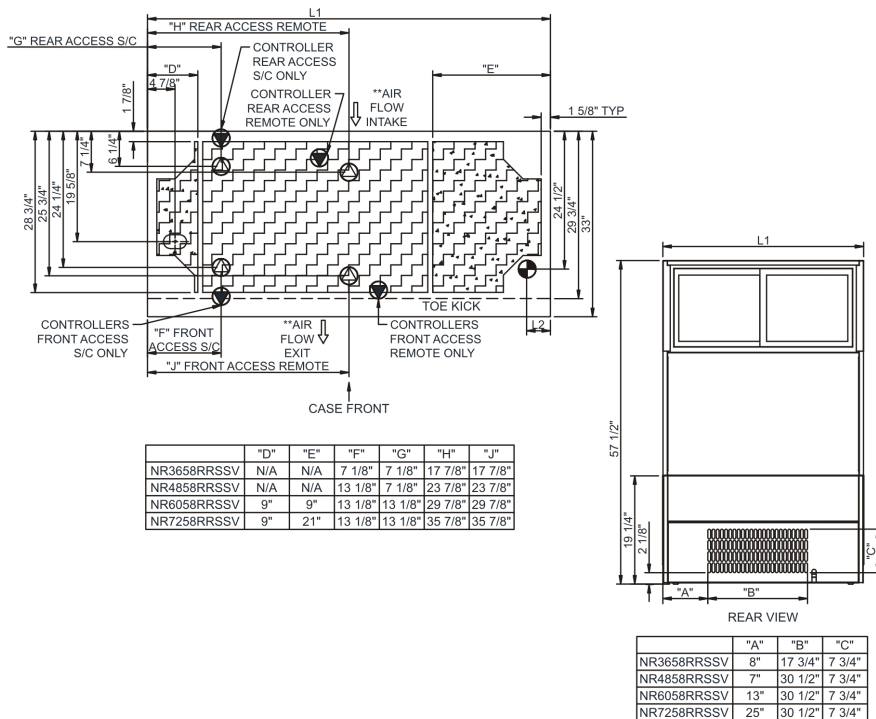
Combination Convertible Service Above Refrigerated Self-Service Case

Structural Concepts

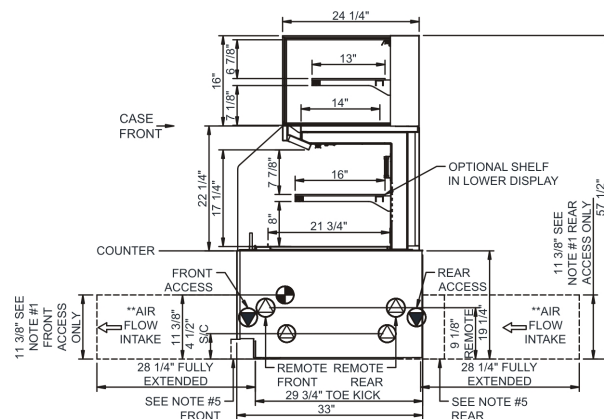
Intended Environment: Type II - Designed to operate in ambient conditions of 80°F and 60% relative humidity unless noted otherwise in system information below.

| Zone | Intended Product To Be Displayed | Warmest Avg Prod Temp ° F |
|------|---|---------------------------|
| 1 | Packaged / unpackaged refrigerated products | 40 |

PLAN VIEW



SIDE VIEW



NOTES:

1. 11 3/8" TALL, FULL WIDTH OF CASE OPENING IN CABINET OR COUNTER IS REQUIRED TO PULL OUT REFRIGERATION SYSTEM.
2. BACK OF COUNTER/ CABINET MUST BE VENTED PROPERLY FOR ADEQUATE AIRFLOW TO CONDENSER.
3. **REPRESENTS REAR PULLOUT REFRIGERATION, AIR FLOW INTAKE AND EXIT DETAILS ARE REVERSED WITH FRONT PULLOUT REFRIGERATION OPTION.
4. SELF-CONTAINED ACCESS ONLY BY PULLING OUT CONDENSER UNIT.
5. 4" OPEN AREA CLEARANCE REQUIRED FOR AIR FLOW FRONT AND REAR OF CASE.

NOTE: ALL DIMENSIONS APPROXIMATE



ELECTRICAL JUNCTION BOX
(SUPPLIED WITH 6" LEADS OR POWER CORD)



LOCATION OF DRAIN TUBE FOR REMOTE REF. ONLY (SUPPLIED WITH $\frac{3}{4}$ " OR $1\frac{1}{2}$ " PVC TUBE).



➔ REFRIGERATION LINE CONNECTION.



**REMOTE FLOOR SINK & UTILITIES
ACCESS AREA.**



SELF-CONTAINED CASE SERVICE ACCESS AREA



DRY CASE SERVICE ACCESS AREA.

Model Technical Specifications

| Model Technical Specifications | | | | | | | | | | | | | | | | |
|--------------------------------|-----|-------|------|------------------------|------------|---------|-----|------|----------|-------|-------|-----------------|-------|------------------------------|------------------------------|--------|
| Model | L" | L1" | L2" | System Circuit Volts | | | Phs | Freq | Amps *** | Watts | Wires | NEMA Plug | SST | Conv. Rack RTI _{UH} | Para. Rack RTI _{UH} | Est Wt |
| NR3658RRSSV | N/A | 35.75 | 4.13 | Remote(Type I) | Circuit #1 | 110-120 | 1 | 60 | 1.67 | 88 | 2+G | Leads Single | | 2376 | 2200 | 80 |
| | | | | Remote(Type I) | Circuit #1 | 110-120 | 1 | 60 | 1.67 | 88 | 2+G | Leads Single | 20.00 | 2376 | 2200 | |
| | | | | Remote(Type II) | Circuit #1 | 110-120 | 1 | 60 | 1.67 | 88 | 2+G | Leads Single | | 2894 | 2680 | |
| | | | | Self-Contained (R513A) | Circuit #1 | 110-120 | 1 | 60 | 16.00 | 1,221 | 2+G | 5-20P or L5-20P | N/A | N/A | N/A | |
| NR4858RRSSV | N/A | 47.75 | 4.13 | Remote(Type I) | Circuit #1 | 110-120 | 1 | 60 | 1.74 | 104 | 2+G | Leads Single | 20.00 | 3110 | 2880 | 1,000 |
| | | | | Remote(Type II) | Circuit #1 | 110-120 | 1 | 60 | 1.74 | 104 | 2+G | Leads Single | 20.00 | 3802 | 3520 | |
| | | | | Self-Contained (R513A) | Circuit #1 | 208-240 | 1 | 60 | 11.20 | 1,653 | 2+G | 6-15P or L6-15P | N/A | N/A | N/A | |
| NR6058RRSSV | N/A | 59.75 | 4.13 | Remote(Type I) | Circuit #1 | 110-120 | 1 | 60 | 1.85 | 123 | 2+G | Leads Single | 20.00 | 3888 | 3600 | 1,200 |
| | | | | Remote(Type II) | Circuit #1 | 110-120 | 1 | 60 | 1.85 | 123 | 2+G | Leads Single | 20.00 | 4730 | 4380 | |
| | | | | Self-Contained (R513A) | Circuit #1 | 208-240 | 1 | 60 | 12.00 | 1,925 | 2+G | 6-15P or L6-15P | N/A | N/A | N/A | |
| NR7258RRSSV | N/A | 71.75 | 4.13 | Remote(Type I) | Circuit #1 | 110-120 | 1 | 60 | 1.92 | 137 | 2+G | Leads Single | 20.00 | 4644 | 4300 | 1,300 |
| | | | | Remote(Type II) | Circuit #1 | 110-120 | 1 | 60 | 1.92 | 137 | 2+G | Leads Single | 20.00 | 5659 | 5240 | |
| | | | | Self-Contained (R513A) | Circuit #1 | 208-240 | 1 | 60 | 12.00 | 1,938 | 2+G | 6-15P or L6-15P | N/A | N/A | N/A | |

*** Does not include electric defrost on freezer models.

Regulatory Approvals:

| | |
|------------|--|
| All Models | <p>Accordance with AHRI Std 1200</p> <p>ETL Listed to UL 471</p> <p>ETL Listed to CAN/CSA 22.2 No. 120</p> <p>ETL Sanitation to NSF/ANSI 7</p> |
|------------|--|



In Accordance with
AHRI Std 1200



Important Notes:

- 1) ELECTRICAL NOTE: If GFCI is required, a GFCI breaker MUST be used in lieu of a GFCI receptacle.
2) Glass warranty only applicable to first point of delivery.

⚠ WARNING: This product can expose you to chemicals, including Urethane (Ethyl Carbamate), which are known to the State of California to cause cancer and birth defects or other reproductive harm. For more information go to www.P65Warnings.ca.gov.

Note: Information is subject to change at any time. Visit www.structuralconcepts.com for the most current specs.

21869985

Revised 4-5-2022